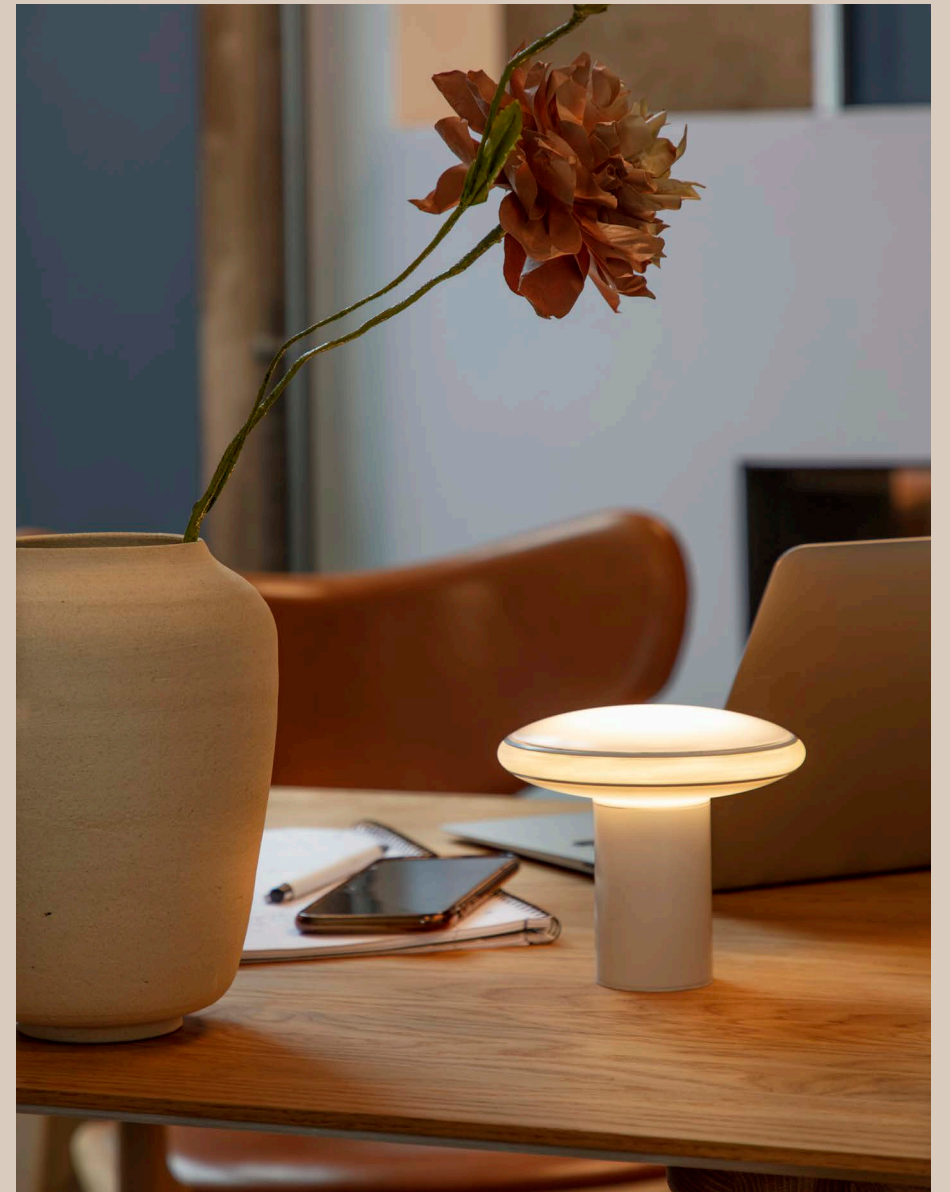


THE COLLECTION



S H  D E



BETTER LIGHT - BETTER LIVING



We believe that design must be able to improve life to justify its existence.

That's why we have created ØS1 to be fully adjustable in terms of light directions, intensity, temperature and colour. Only with this array of opportunities, you can truly create light that fits your specific wants and needs.

We all know that light is important. Like food, friends and family we should not take light for granted. If we invest ourselves and give the lighting in our homes the right attention, making sure it is fulfilling our needs, it will give you so much everyday joy and quality in return.

In the morning while enjoying your first cup of coffee, you want a warm and gentle light for waking up. When you sit down to do your paperwork in the evening you need a bit brighter and cooler light, to focus properly. You need a clear light to present the food you have cooked for friends and family, but still soft enough to set a cosy atmosphere. When you're ready to go to bed you want that soft and warm light again to calm down your body and mind.

In short, we combine cutting edge technology with Scandinavian design tradition to provide Better Light - Better Living.

S H  D E



THE DESIGNER

ØS1 is designed by award-winning designer Øivind Alexander Slaatto.

The Danish designer has his own design studio in Copenhagen, Denmark and he has made quite a name of himself designing iconic products for international renowned high-end brands. Slaatto always tries to find simple, obvious yet poetic solutions - often with inspiration in the world of nature.

"From nature, we are used to a great variety of light. That variety from sunrise to sunset helps to ensure our well being. I wanted to create a lamp that would embrace that and ØS1 makes a powerful impact. The direction, the colors and the intensity of light of ØS1 create the variation that we humans need."



Øivind Alexander Slaatto 9





S H  D E

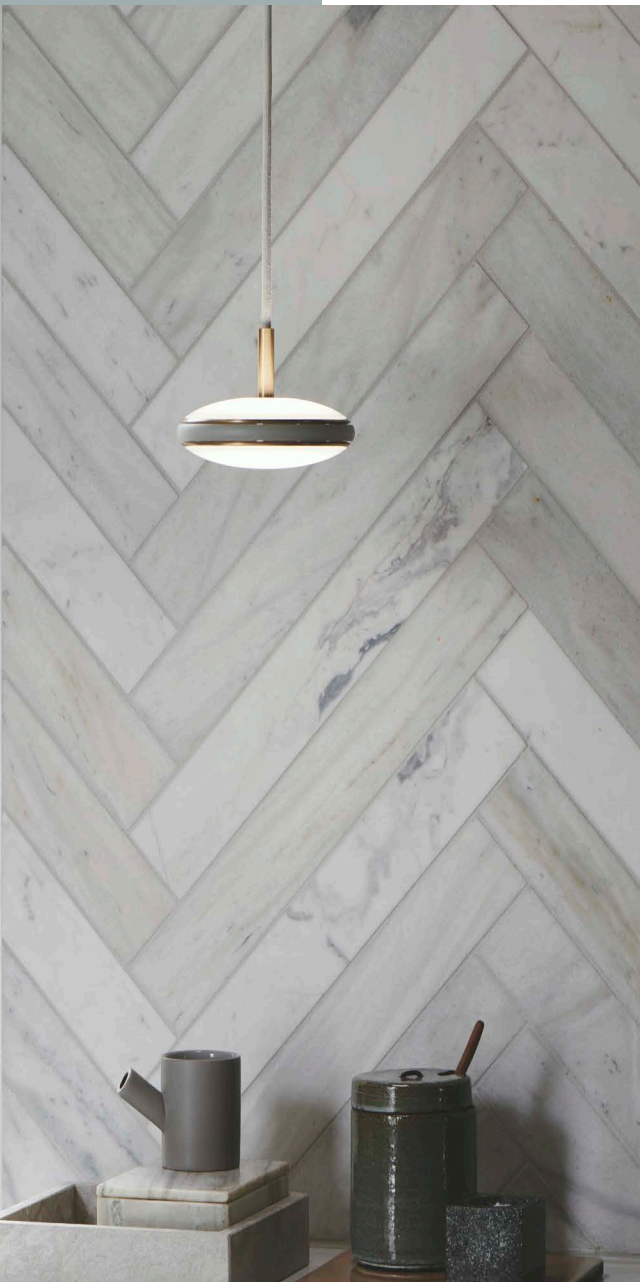


Our lamps are made to be flexible and have almost infinite possibilities. The ØS1 series are made to be personalised.

Set the temperature, the intensity and the color of the light source. Use it as an up-light, a down-light, a bed-light, a kitchen light, a dinner-light. In other words: make it your own light.

At Shade we combine the latest LED and Bluetooth technology with beautiful Nordic design. The result is an aesthetic lamp that is flexible and easy to fit into any environment.

BETTER LIGHT - BETTER LIVING



ØS1 PENDANT

The ØS1 Pendant lamp combines a timeless design with the modern ØS1 design. It fits any ceiling with its canopy with built in powersupply.

It has 2 meters long cable and changeable power supply. Shade ØS1 Pendant is either black or white powder coated with matching cable, and perfect brass accents with brass or black rings

Thus, Shade ØS1 Pendant lamp is not just a design object. It includes high-quality white adjustable top and bottom LEDs delivering 2700-5600 Kelvin, as well as full RGB spectrum in the middle light zone.

All three lighting zones can be adjusted individually.

In addition, the lamp provides up to 1000 lumen and scores 95 on the Color Rendering Index (CRI)



SHADE ØS1 PENDANT

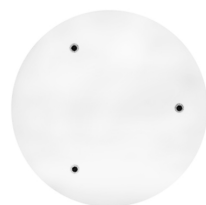




ØS1 CEILING BASE

Shade ØS1 Ceiling base 3 equipped with 3 x ØS1 Pendants. It gives the user an extraordinary good light experience and the ability to control the light with Better Light app and Bluetooth Node. It has 2,4 meters long and adjustable wires. Shade ØS1 Ceiling Base 3 is either black or white powder coated.

Thus, Shade ØS1 Ceiling Base 3 is not just a design object. It includes high-quality white adjustable top and bottom LEDs delivering 2700-5600 Kelvin, as well as full RGB spectrum in the middle light zone. All three lighting zones can be adjusted individually. In addition, the lamp provides up to 3000 lumen and scores 95 on the Color Rendering Index (CRI)



SHADE ØS1 CEILING BASE





ØS1 SWAN

The Swan wall lamp combines a timeless design with the modern ØS1 design. It is adjustable in height and can be turned from side to side to set the perfect position.

It has 2 meters long cable and changeable power supply. Shade ØS1 Swan is either black or white powder coated with matching cable. ØS1 Swan lamps with brass or black rings.

Thus, Shade ØS1 Swan is not just a design object. It includes high quality white adjustable top and bottom LEDs delivering 2700-5600 Kelvin, as well as full RGB spectrum in the middle light zone. All three lighting zones can be adjusted individually. In addition, the lamp provides up to 1000 lumen and scores 95 on the Color Rendering Index (CRI).



SHADE ØS1 SWAN





ØS1 WALL

The Wall lamp combines a timeless design with the modern ØS1 design. It mounts perfectly on every vertical or horizontal surface, adding beautiful light to its surroundings.

It has 2 meters long cable and changeable power supply. Shade ØS1 Wall is either black or white powder coated with matching cable, or brass coloured with the choice of black or white cable. ØS1 Wall lamps with brass or black rings.

Thus, Shade ØS1 Wall is not just a design object. It includes highquality white adjustable top and bottom LEDs delivering 2700-5600 Kelvin, as well as full RGB spectrum in the middle light zone.

All three lighting zones can be adjusted individually. In addition, the lamp provides up to 1000 lumen and scores 95 on the Color Rendering Index (CRI



SHADE ØS1 WALL





ØS1 FLOOR

The ØS1 Floor lamp combines a timeless design with the modern ØS1 design. It fits perfectly on every floor or horizontal surface, adding beautiful light to its surroundings. This floor lamp is perfectly suited to use as a reading light, while sitting in a comfy chair or daybed.

It has 2 meters long cable and changeable power supply. Shade ØS1 Floor is either black or white powder coated with matching cable. ØS1 Floor lamps with brass or black rings.

Thus, Shade ØS1 Floor lamp is not just a design object. It includes high-quality white adjustable top and bottom LEDs delivering 2700-5600 Kelvin, as well as full RGB spectrum in the middle light zone. All three lighting zones can be adjusted individually. In addition, the lamp provides up to 600 lumen and scores 95 on the Color Rendering Index (CRI)



SHADE ØS1 FLOOR





ØS1 TABLE

The ØS1 Table lamp combines a timeless design with the modern ØS1 design. It fits perfectly on every table or horizontal surface, adding beautiful light to its surroundings.

It has 2 meters long cable and changeable power supply. Shade ØS1 table is either black or white powder coated with matching cable, and perfect brass accents. ØS1 Table lamps with brass or black rings.

Thus, Shade ØS1 Table lamp is not just a design object. It includes high-quality white adjustable top and bottom LEDs delivering 2700-5600 Kelvin, as well as full RGB spectrum in the middle light zone. All three lighting zones can be adjusted individually. In addition, the lamp provides up to 600 lumen and scores 95 on the Color Rendering Index (CRI)



SHADE ØS1 TABLE





ØS1 MINI

The Mini lamp combines a timeless design with the modern ØS1 design. It mounts perfectly on every vertical or horizontal surface, adding beautiful light to its surroundings.

It has 2 meters long cable and changeable power supply. Shade ØS1 Mini is either black or white powder coated with matching cable, or brass coloured with the choice of black or white cable. ØS1 Mini lamps with brass or black rings.

Thus, Shade ØS1 Mini is not just a design object. It includes high quality white adjustable top and bottom LEDs delivering 2700-5600 Kelvin, as well as full RGB spectrum in the middle light zone.

All three lighting zones can be adjusted individually. In addition, the lamp provides up to 600 lumen and scores 95 on the Color Rendering Index (CRI



SHADE ØS1 MINI





ØS1 TABLE, FIXED

The ØS1 Table fixed lamp combines a timeless design with the modern ØS1 design. It fits perfectly on every table or horizontal surface, adding beautiful light to its surroundings.

It has 2 meters long cable and changeable power supply. Shade ØS1 table is either black or white powder coated with matching cable, and perfect brass accents. ØS1 Fixed lamps with brass or black rings.

Thus, Shade ØS1 Table fixed lamp is not just a design object. It includes high-quality white adjustable top and bottom LEDs delivering 2700-5600 Kelvin, as well as full RGB spectrum in the middle light zone. All three lighting zones can be adjusted individually. In addition, the lamp provides up to 600 lumen and scores 95 on the Color Rendering Index (CRI)



SHADE ØS1 TABLE, FIXED





ØS1 RAIL

Shade ØS1 Rail is a suspension lamp equipped with 3 x ØS1 luminaires.

It gives the user an extraordinary good light experience and the ability to control the light with the Better Light app and the Bluetooth Node. It has 2,4 meters long and adjustable, secure and energized wires. Shade Rail is either black or white powder coated with matching wire. ØS1 Rail lamps with brass or black rings.

Thus, Shade ØS1 Rail is not just a design object. It includes high-quality white adjustable top and bottom LEDs delivering 2700-5600 Kelvin, as well as full RGB spectrum in the middle light zone. All three lighting zones can be adjusted individually. In addition, the lamp provides up to 3000 lumen and scores 95 on the Color Rendering Index (CRI)



SHADE ØS1 RAIL





ØS1 PORTABLE

24-hours of running time without mains electricity. Bring the light with you. The ØS1 Portable gives you a stylish light source to bring along anywhere you go, and with the long battery life it will still be glowing in the morning

It is available in four variants, all with 220 lumens of light output CRI of 90+, and 2700K of light colour. It has a button for operating the lamp and built in stepless dimmer function.



SHADE ØS1 PORTABLE





GS1 MUSHROOM

GS1mushroom table lamp, or GS1 mushroom, as it is also known as, is a timeless classic, both shape and function makes the GS1 the perfect companion for casual lighting and "hygge"

Available with brass, white and black base and opal, or smoked glass. Accompanied by a fabric cable matching the glass, and cable mounted dimmer with on/off and soft start.

Mushroom have a E14 lightsource, and built in stepless dimmer function, which provides soft and calm lighting.

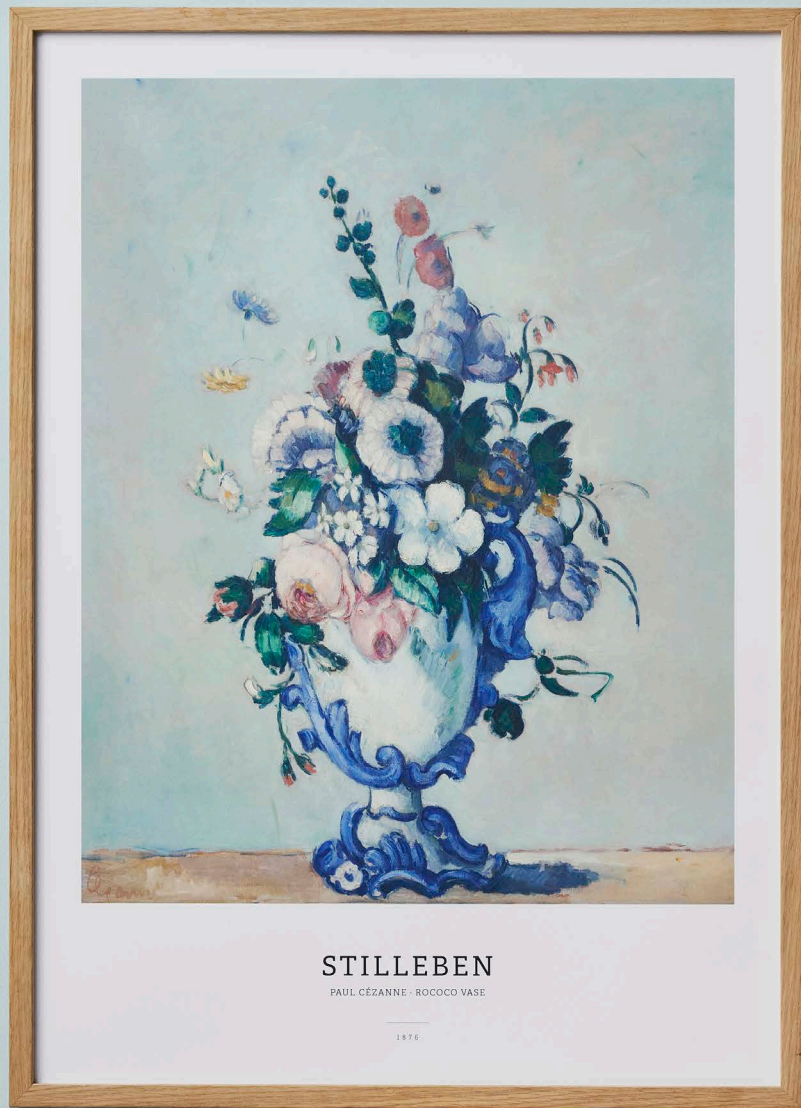


SHADE GS1 MUSHROOM









STILLEBEN

PAUL CÉZANNE · ROCOCO VASE

1876



CONTACT

HEAD OFFICE
Shadelights ApS
Toftebakken 7
3460 Birkerød
Denmark
info@shadelights.com

SALES
Allan Gjedde Pedersen
agp@shade.one
T: +45 9290 0002

